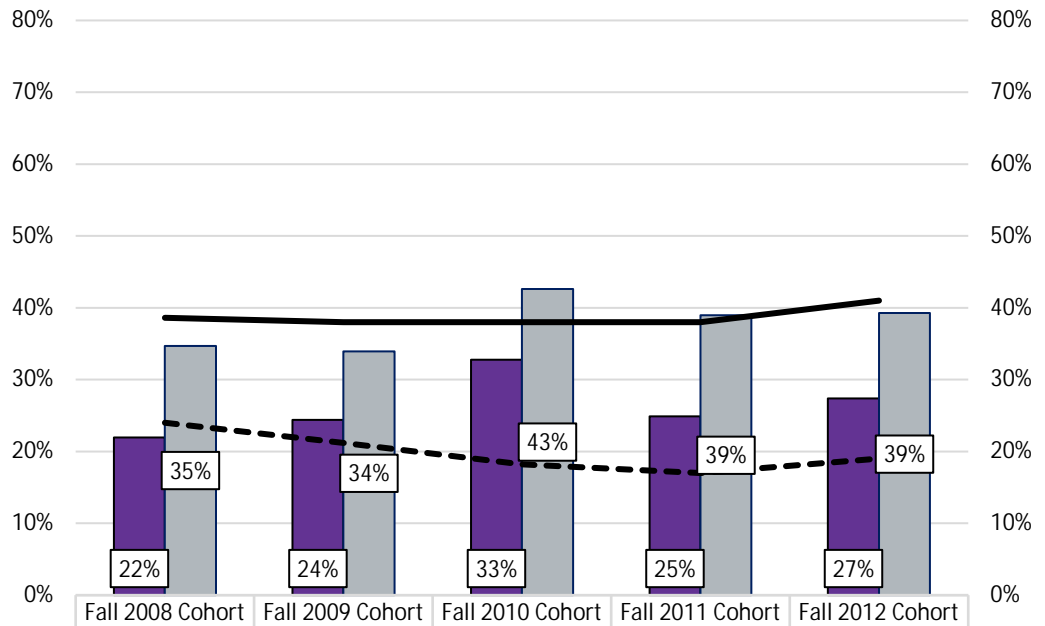


All First-Time Full-Time Bachelor's Degree-Seeking Six-Year Graduation Rates



| | Fall 2008 Cohort | Fall 2009 Cohort | Fall 2010 Cohort | Fall 2011 Cohort | Fall 2012 Cohort |
|---|------------------|------------------|------------------|------------------|------------------|
| % Retained at MGA | 22% | 24% | 33% | 25% | 27% |
| % Retained-System | 35% | 34% | 43% | 39% | 39% |
| State University Average | 39% | 38% | 38% | 38% | 41% |
| State College Average | 24% | 21% | 18% | 17% | 19% |