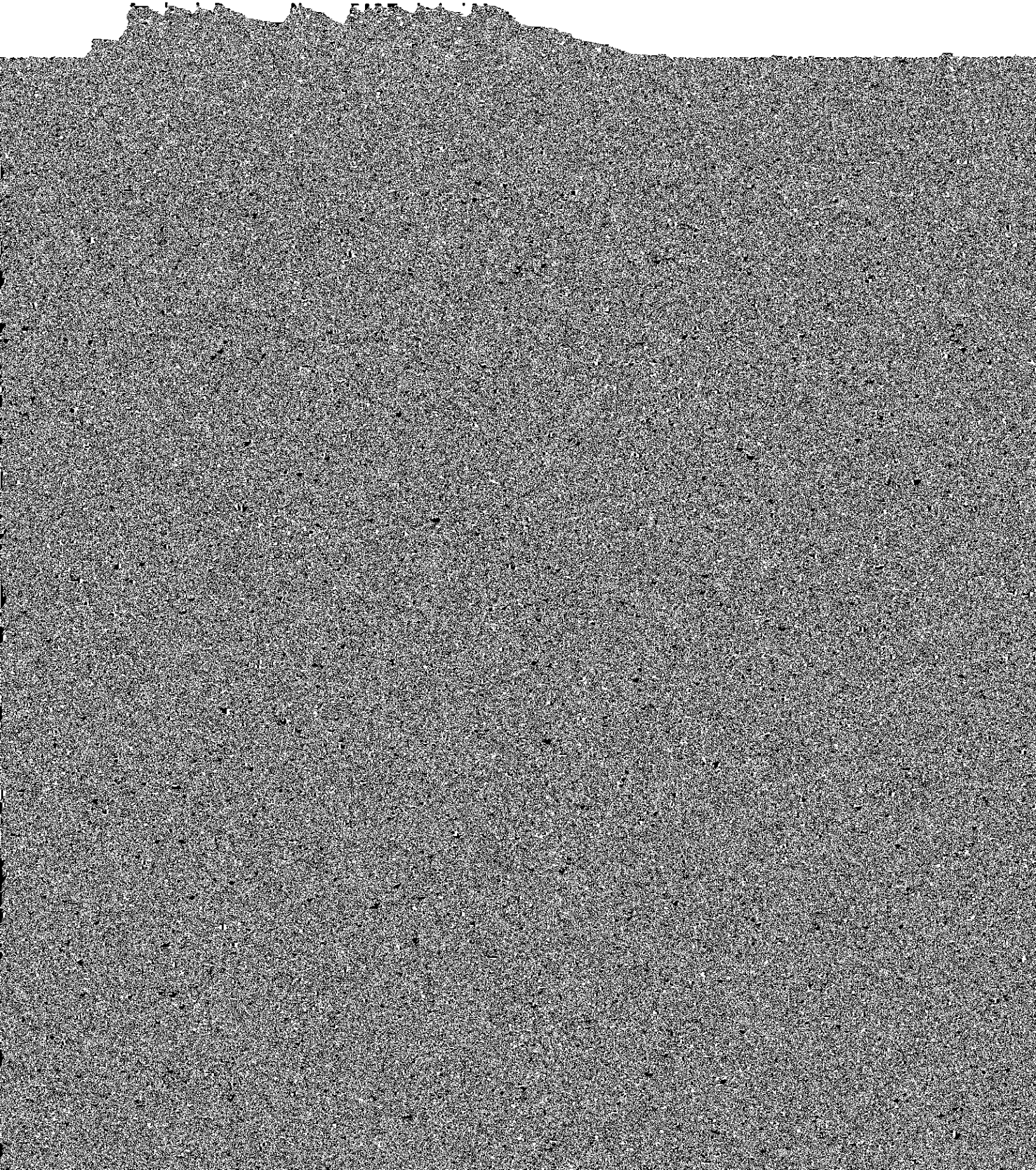


Comprehensive Program Review Final Response



Comprehensive Program Review Report

College or School: Aviation

Department: Aviation Science and Management

Date of Last Internal Review: 2/25/19

Outcome of Previous Program Review (brief narrative statement, if applicable):

Current Date: 04/11/19

Executive Summary: This program moved to the College of Aviation and is currently in the process of finalizing articulation agreements with two institutions, but are looking to expand to other institutions. Additionally, we seek to expand this to the Community College of the Air Force. We have also developed the new pathway for maintenance students to obtain a 4-year degree. We have deactivated the Maintenance Management track. We anticipate this will lead to increased enrollment.

Categorical Summation

Check any of the following to categorically describe the status of the institution's program concerning this program.

Program MEETS Institution's Criteria

Program is critical to the institutional mission and will be retained.

Program is critical to the institutional mission and is growing or a high demand field

and thus will be enhanced.

Program DOES NOT MEET Institution's Criteria

Program will be placed on a monitoring status.

Program will undergo substantive curricular revisions.

Program will be deactivated.

Program will be voluntarily terminated.

Other (identify/add text):

Academic Dean Signature:



Date: 4-11-19



Comprehensive Program Review

FY 2018 – 2019

Institution: Middle Georgia State University

Academic Program: Bachelor of Applied Science in Technical Management

College or School: Aviation

Department: Aviation Science and Management

CIP Code: 15.0699

Date of Last Internal Review:

Faculty Completing Report: Ed Weathersbee

Current Date: 2/25/2019

5 Year Enrollment by Campus and Graduation Trends

Enrollment

Campus	Fall 2014	Fall 2015	Fall 2016	Fall 2017	Fall 2018	5 YR Growth
Macon	0	0	3	1	1	-67%
Cochran	0	0	1	2	0	-100%
Warner Robins	0	0	4	2	1	-75%
Dublin	0	0	1	1	0	-100%
Eastman	0	0	0	0	0	0%
Online	0	0	11	8	2	-82%
Off Campus	0	0	0	0	0	0%
Total	0	0	20	14		

0	0	0	2	5	150%

IERB Comprehensive Program Review Rubric and Evaluation

IERB Comprehensive Program Review Rubric and Evaluation