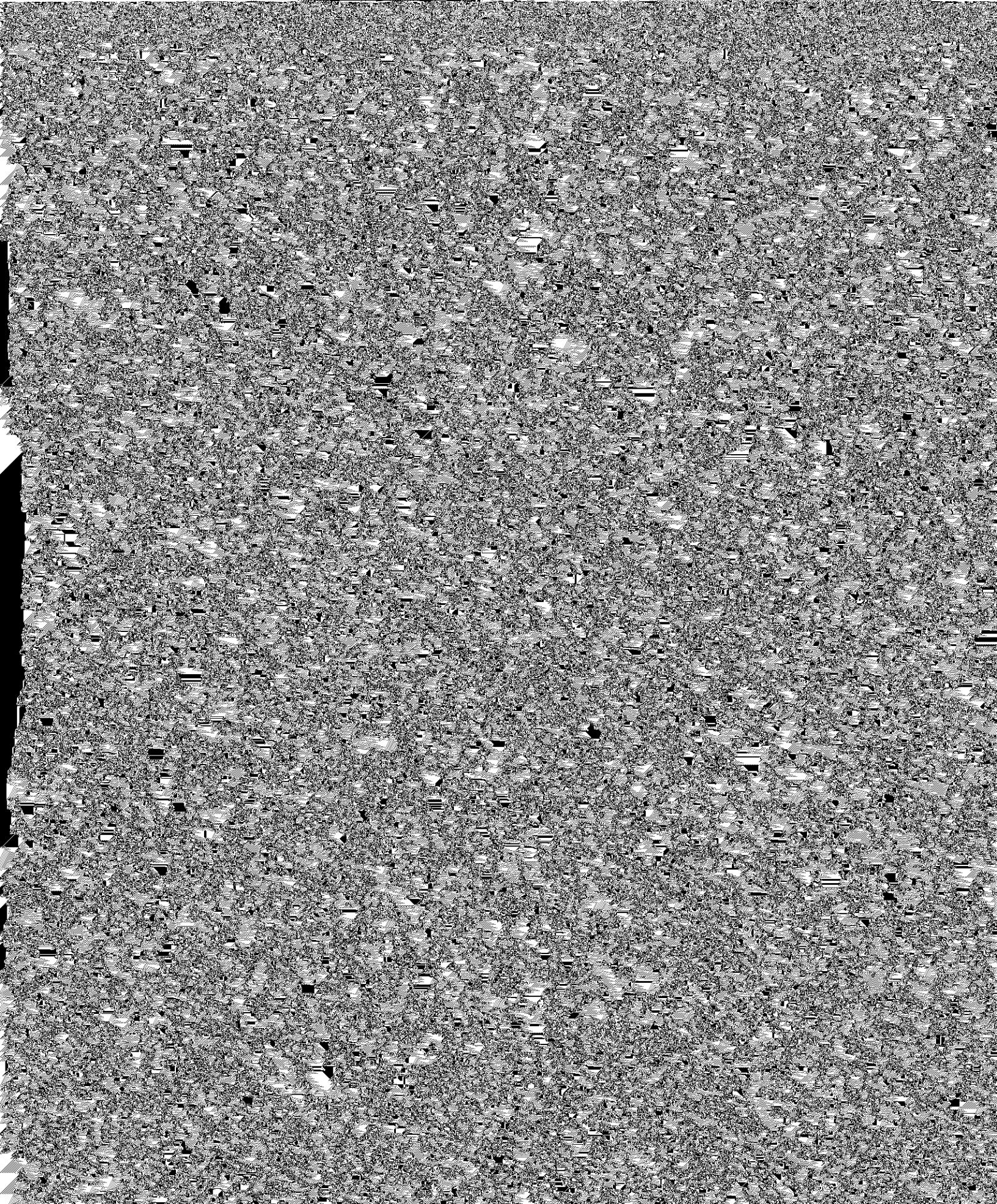




Current Program:

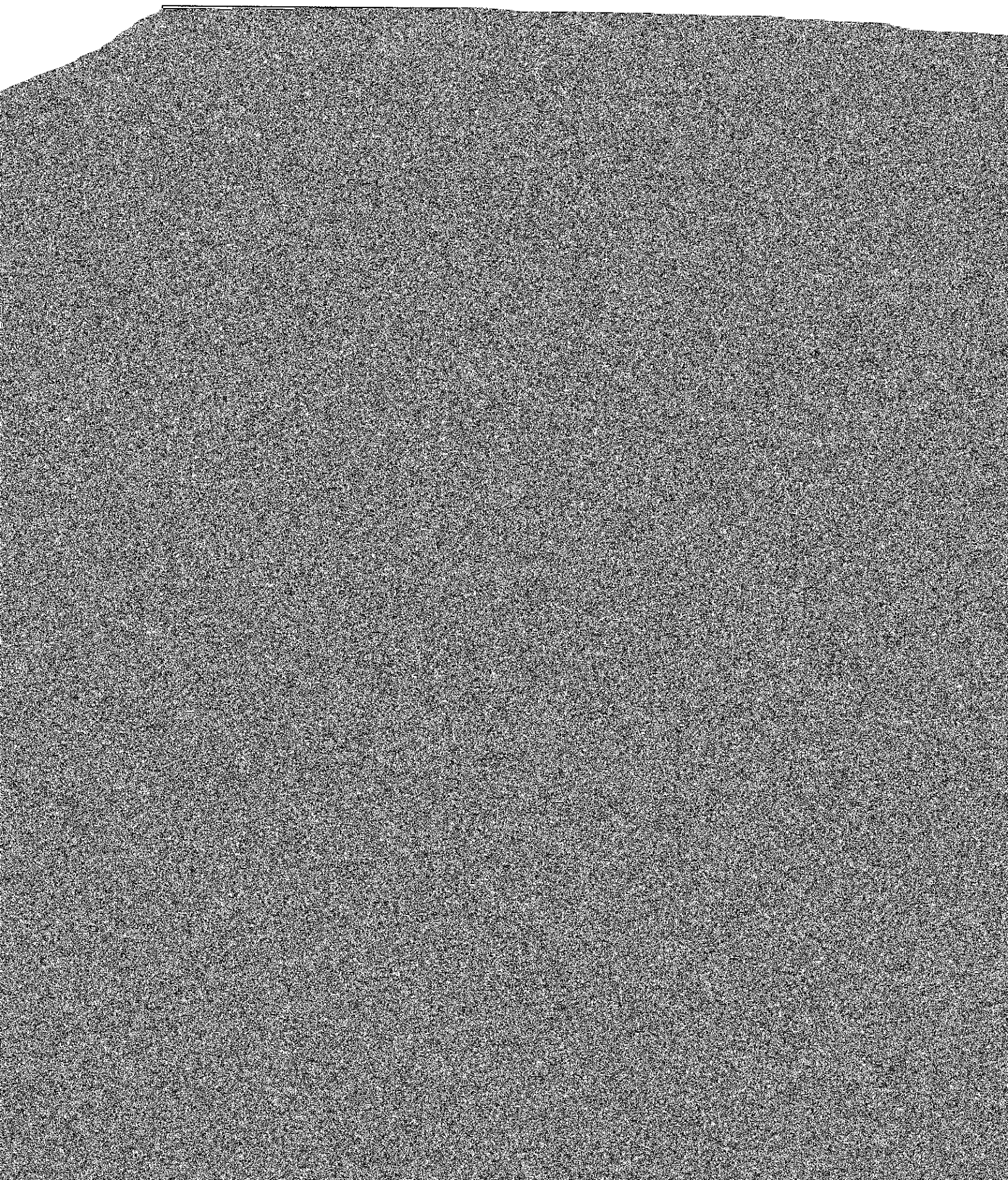
Modified Program:





**TABLE 1: How the program will appear in the catalog**

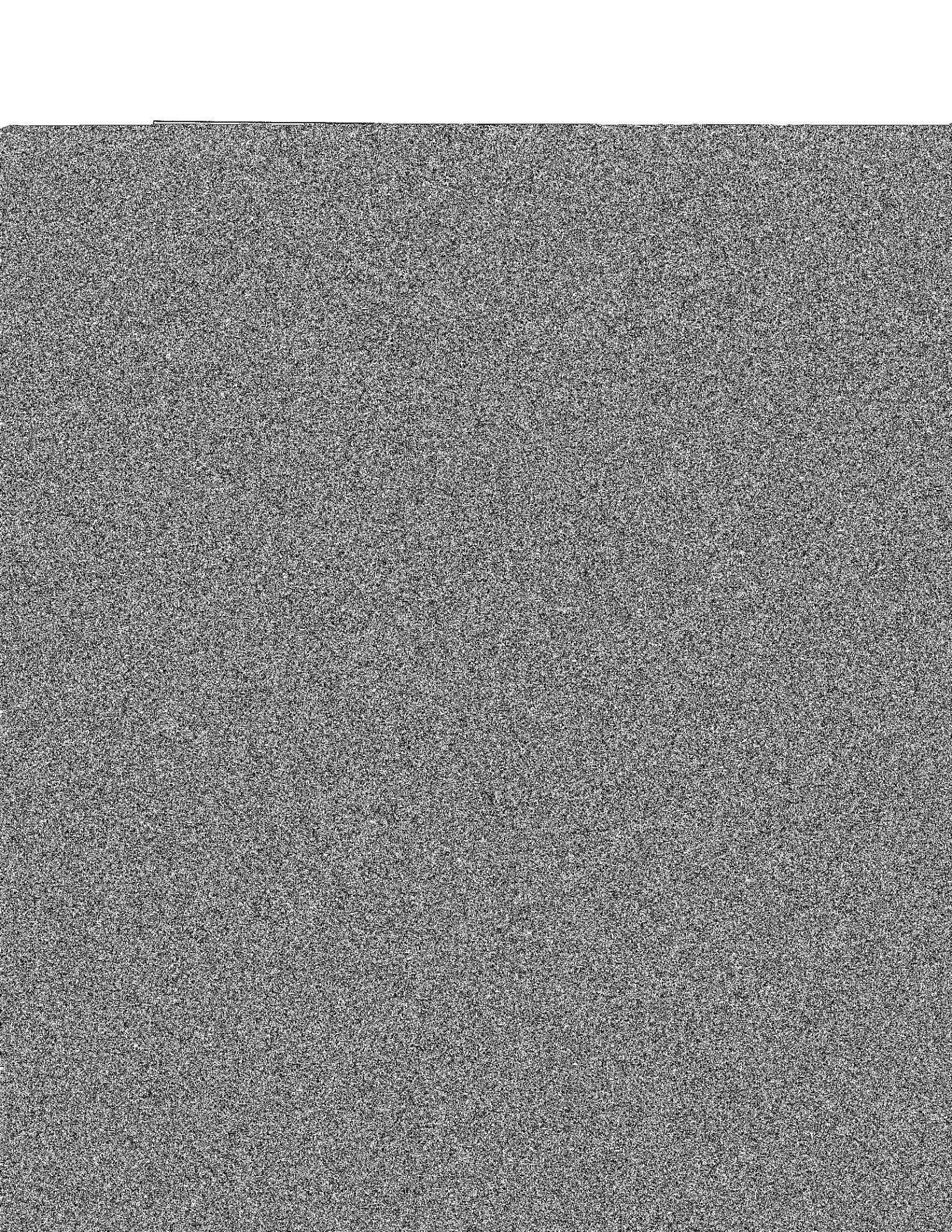
<b>Courses</b> <i>(list acronym, number, and title)</i>	<b>Hours</b>
<b>Area A 1: Communication Skills</b>	



Total Credit Hours: 30

**Concentration**

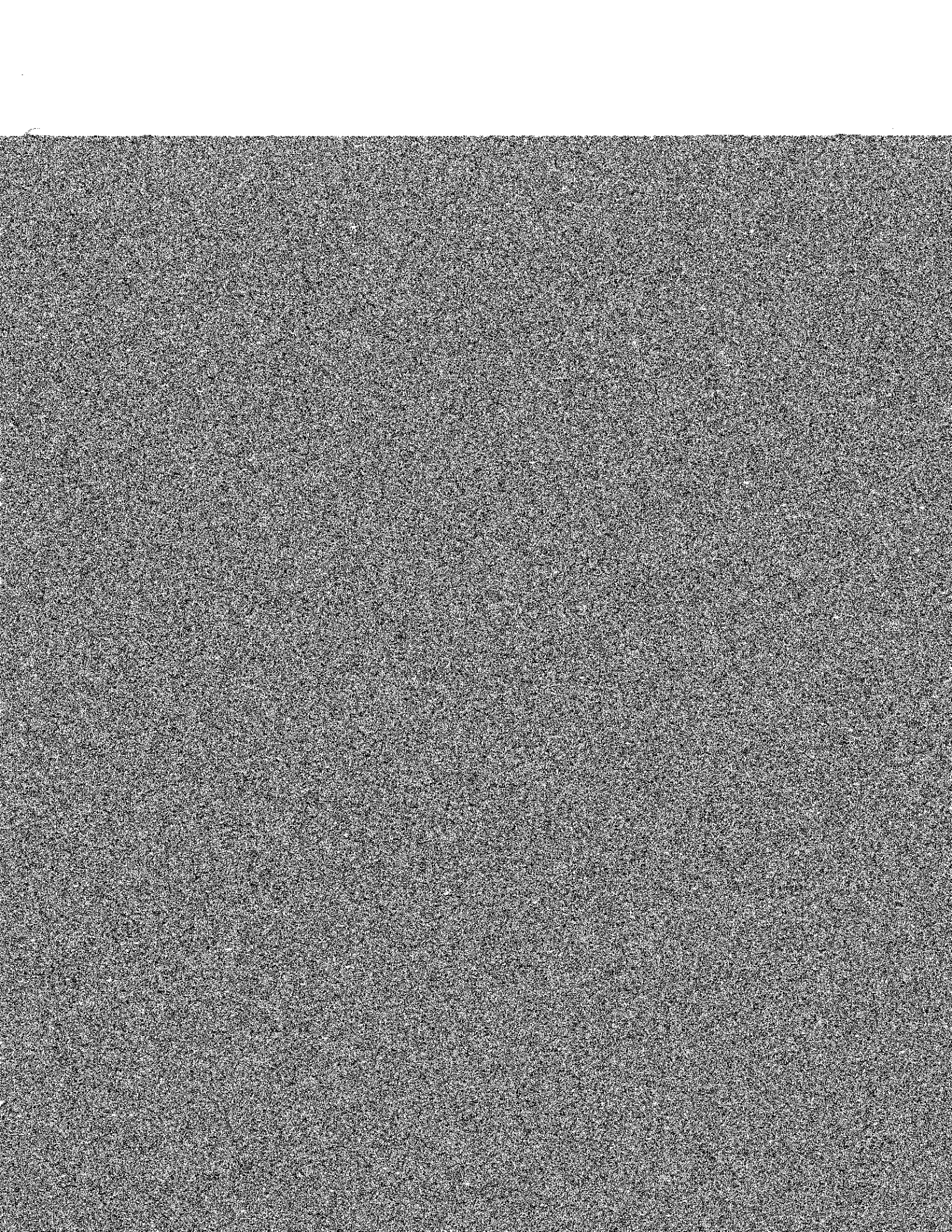
The emphases for the BA in Contemporary Musicianship will be delivered in the Upper Level Applied and Upper Level Ensemble courses. There are two emphases: Classical or Commercial. Students will declare their emphasis at the



Prerequisites: At least a "C" in ENGL 1102/1102H		
HUMN 4471	Comparative Cultures	3 CR
Prerequisites: At least a "C" in ENGL 1102/1102H		
HUMN 4472	Studies in Culture	3 CR
Prerequisites: At least a "C" in ENGL 1102/1102H		
IDS 4010	Gender, Media, and Culture	3 CR
Prerequisites: At least a "C" in ENGL 1102/1102H		
IDS 4050	Performance, Literature, and Culture	3 CR
Prerequisites: At least a "C" in ENGL 1102/1102H		
ITEC 2201	Business Information Applications	3 CR

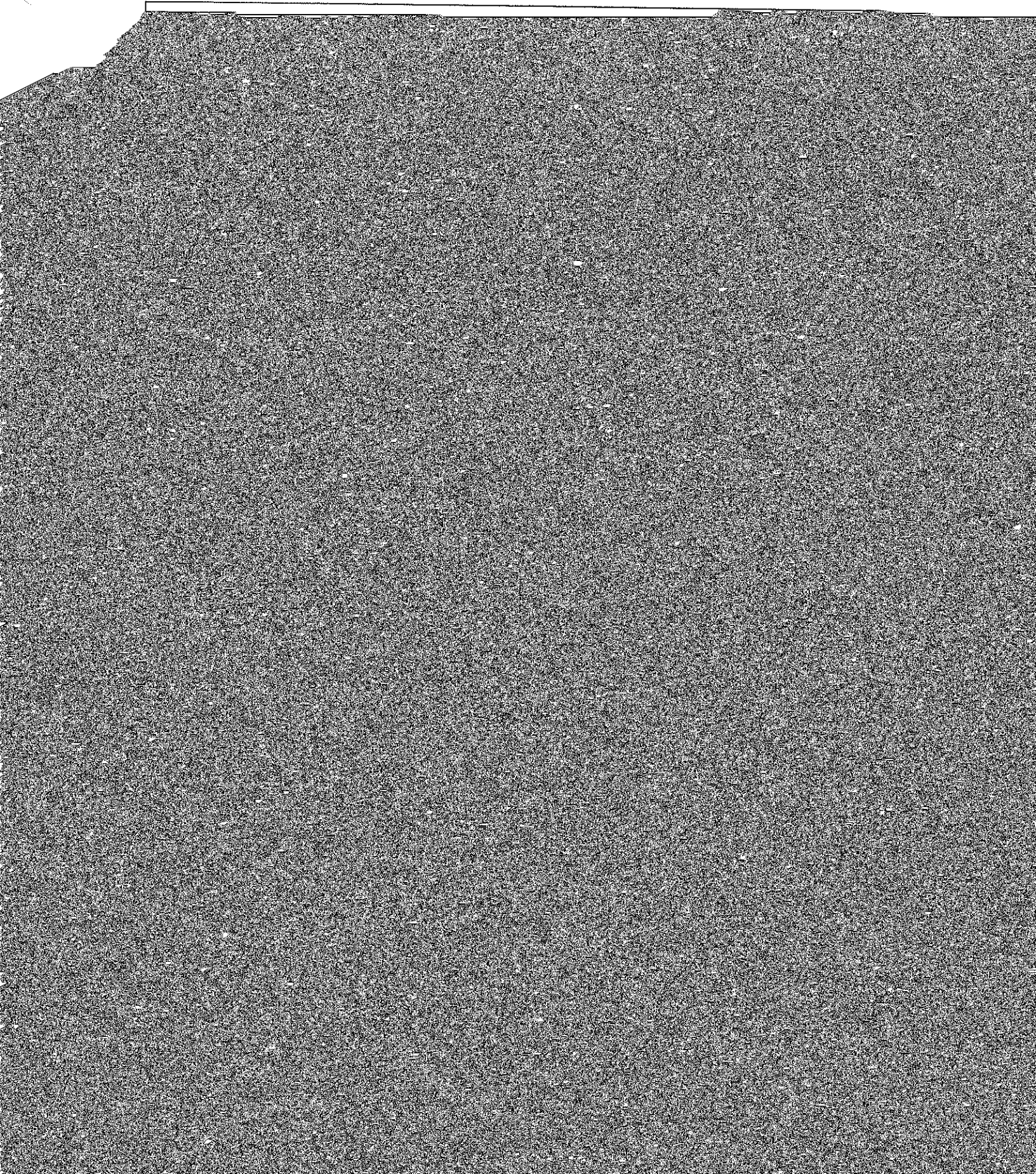


Prerequisites: At least a "C" in ENGL 1101 or 1101H		
NMAC 3999	Special Topics	3 CR
POLS 3075	Interest Groups	3 CR
Prerequisites: POLS 1101 or 1101H		
PSYC 3611	Risk and Decision Making	3 CR
Prerequisites: At least a "C" in PSYC 1101		
Total Credit Hours: 18		
<b>Total Semester Credit Hours</b>		<b>120</b>









Prereq

MUSC 3090

Prereq

MUSC 3092

Prereq

Total Hours

**Electives**

Select 22 Hours  
upper level

MUSC 3050

Prereq

MUSC 3060

Prereq

MUSC 3333

Prereq

MUSC 4100

Prereq

MUSC 4150

Prereq

MUSC 4250

MUSC 4260

ACCT 2000

COMM 2136

CRWR 2105

Prereq

ECON 2105

Prere  
ECON 2106  
Prere  
ENGL 3106  
Prere  
2201  
ENGL 4106  
Prere  
HUMN 215  
Prere  
HUMN 215C  
Prere  
HUMN 2205  
Prere  
HUMN 301  
Prere  
HUMN 3995  
Prere  
HUMN 434C  
Prere  
HUMN 4482  
Prere  
HUMN 4473  
Prere  
HUMN 4472  
Prere  
IDS 4010  
Prere  
IDS 4050  
Prere  
ITEC 2201





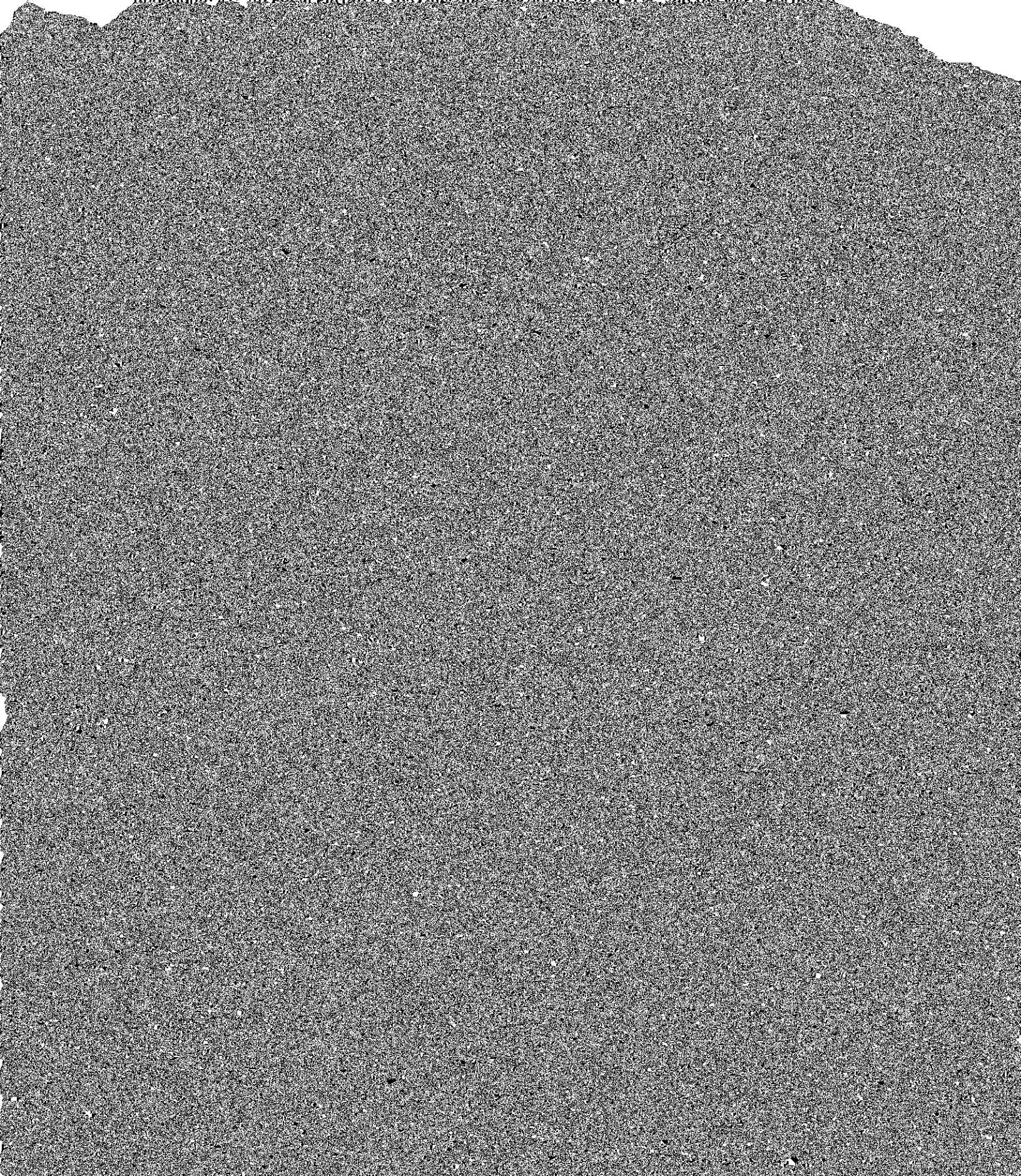
Pre	
NMAC 311	
Pre	
NMAC 366	
Pre	
NMAC 399	
POLS 307	
Pre	
PSYC 361	
Pre	
Total Cred	
Total Se	

Dear Academic Affairs Committee,

The Middle Georgia State University Academic Affairs Board approved the BA in Contemporary Musicianship on **April 21, 2017**.

When the BA in Contemporary Musicianship was approved by the Board on April 21, 2017, it was approved

**Addendum #1: An Email Record of the Questions Presented by the ROP and the MGA Personnel**



**From:** Marci M. Middleton [<mailto:Marci.Middleton@usg.edu>]

**Sent:** Thursday, August 17, 2017 3:17 PM

**To:** Hatch, Melanie L. <[melanie.hatch@mga.edu](mailto:melanie.hatch@mga.edu)>

**Cc:** Wearn, Mary M. <[mary.wearn@mga.edu](mailto:mary.wearn@mga.edu)>; Martha L. Venn <[martha.venn@usg.edu](mailto:martha.venn@usg.edu)>

**Subject:** Middle Georgia State University - Follow-up for Bachelor of Arts with a major in Music/Contemporary Musicianship

Dear Dr. Hatch (Melanie), - good afternoon

Cc: Dr. Wearn, Dr. Venn

The system office has completed a review of Middle Georgia State University's proposed Bachelor of Arts with a major in Music (Contemporary Musicianship). Follow-up questions from both the system office and Fine Arts colleagues are in the attached document.

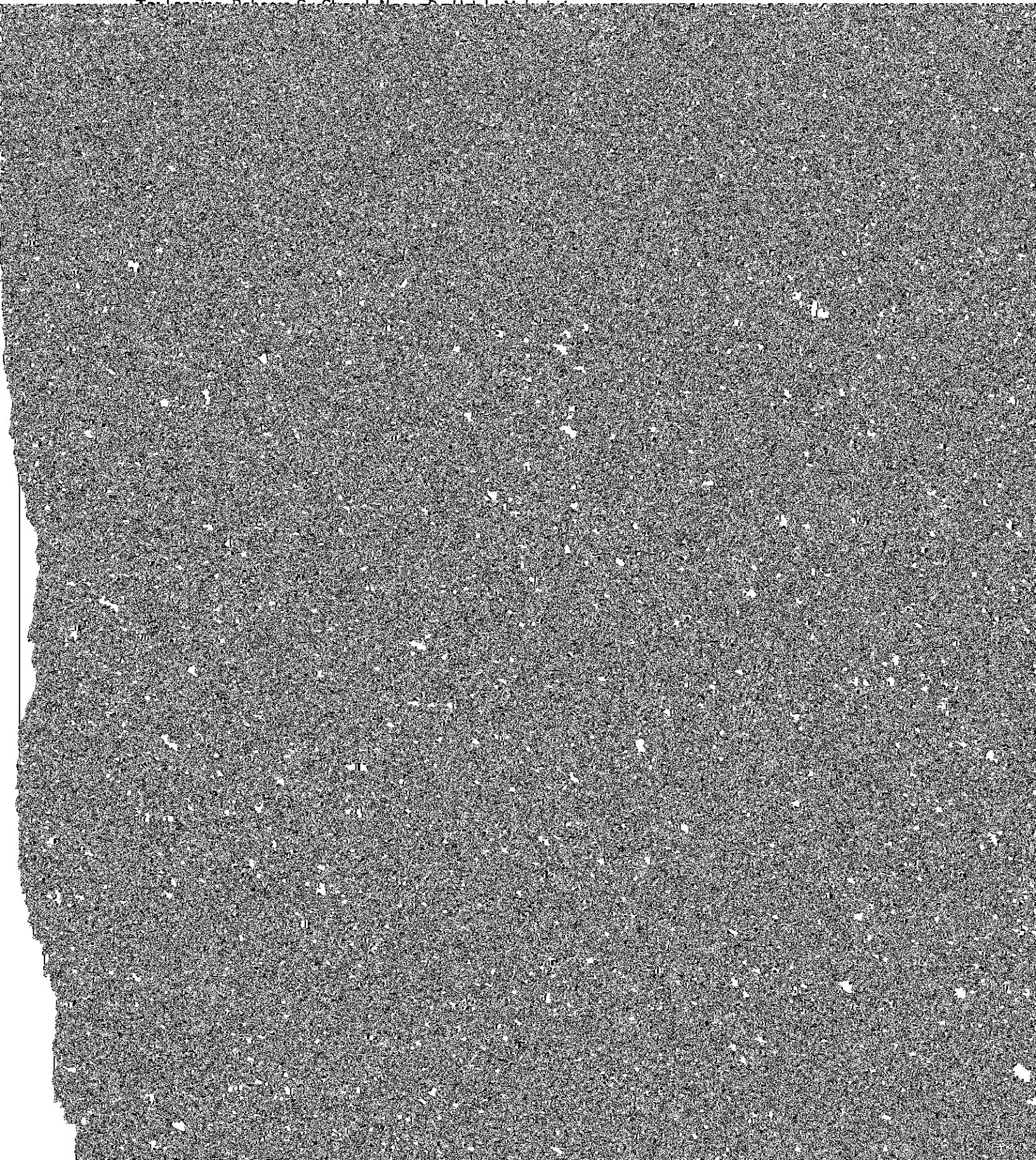
5) Faculty: We note that four faculty members are listed in the roster who can immediately support the program with two faculty lines that will be available FY2010.



**From:** Wearn, Mary M.

**Sent:** Thursday, August 24, 2017 2:45 PM

**To:** [Redacted]



**From:** Wearn, Mary M.

**Sent:** Friday, August 25, 2017 11:22 AM

**To:** Marci M. Middleton <Marci.Middleton@usg.edu>

**Cc:** Martha L. Venn <martha.venn@usg.edu>; Hatch, Melanie I. <melanie.hatch@mea.edu>



1) Addendum #2: The response to Question #2 and the amended course of study.

**BOR Question #2**

**Area F Requirements:** According to the proposal, on pages 20 and 21, the Area F contains eight (8) hours of four semesters of applied music, with the notation that these applied music courses carry co-requisite requirements of enrollment in concomitant ensemble courses. These lower-division ensembles also are referenced in the narrative for the degree. However, unless these ensemble classes are zero-

**TABLE 1: Sample Program of Study Form.**

*(Modify appropriately for undergraduate versus graduate programs.)*

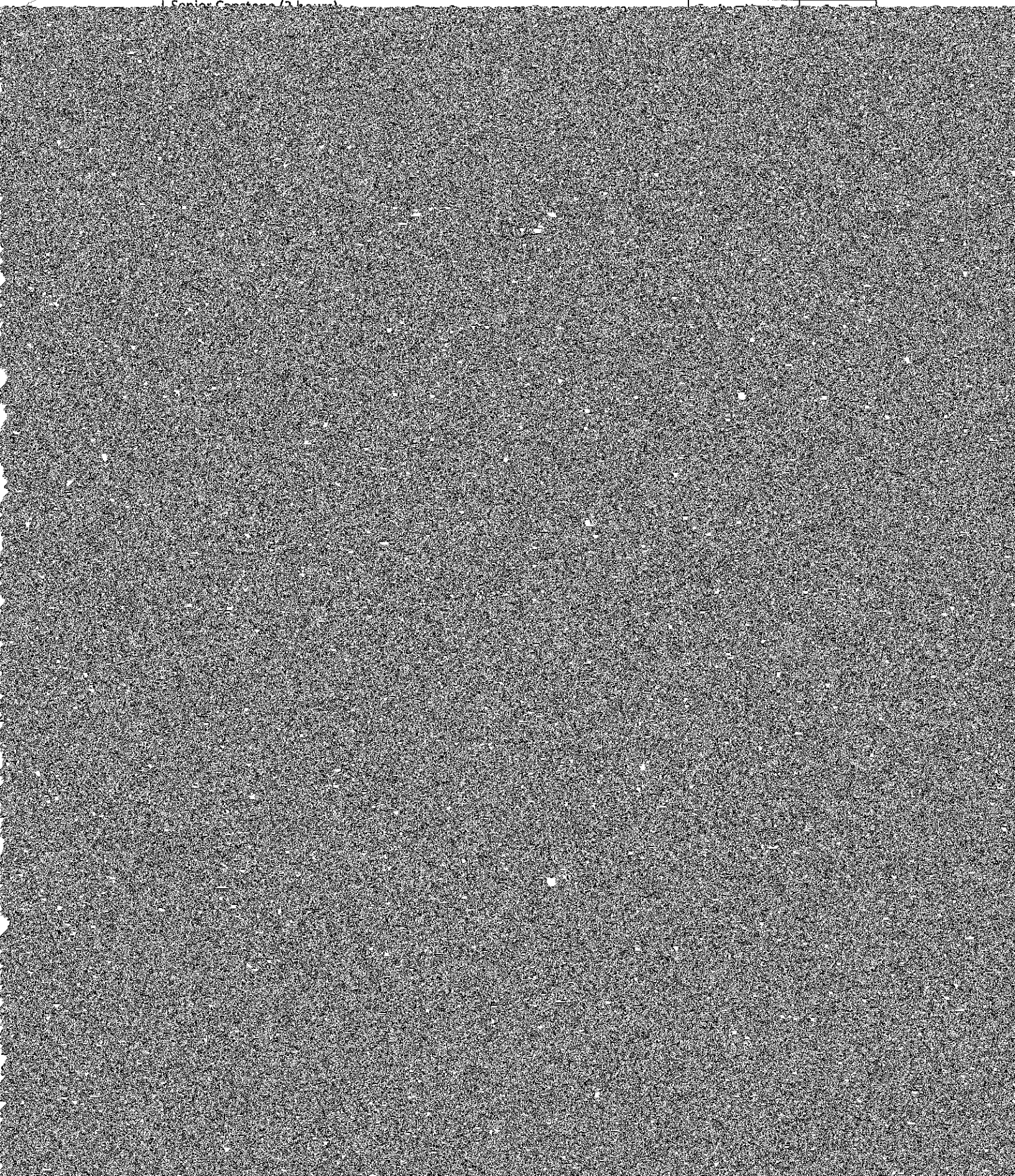
Take two of the following 2-course sequences (Credit: 8 hours)

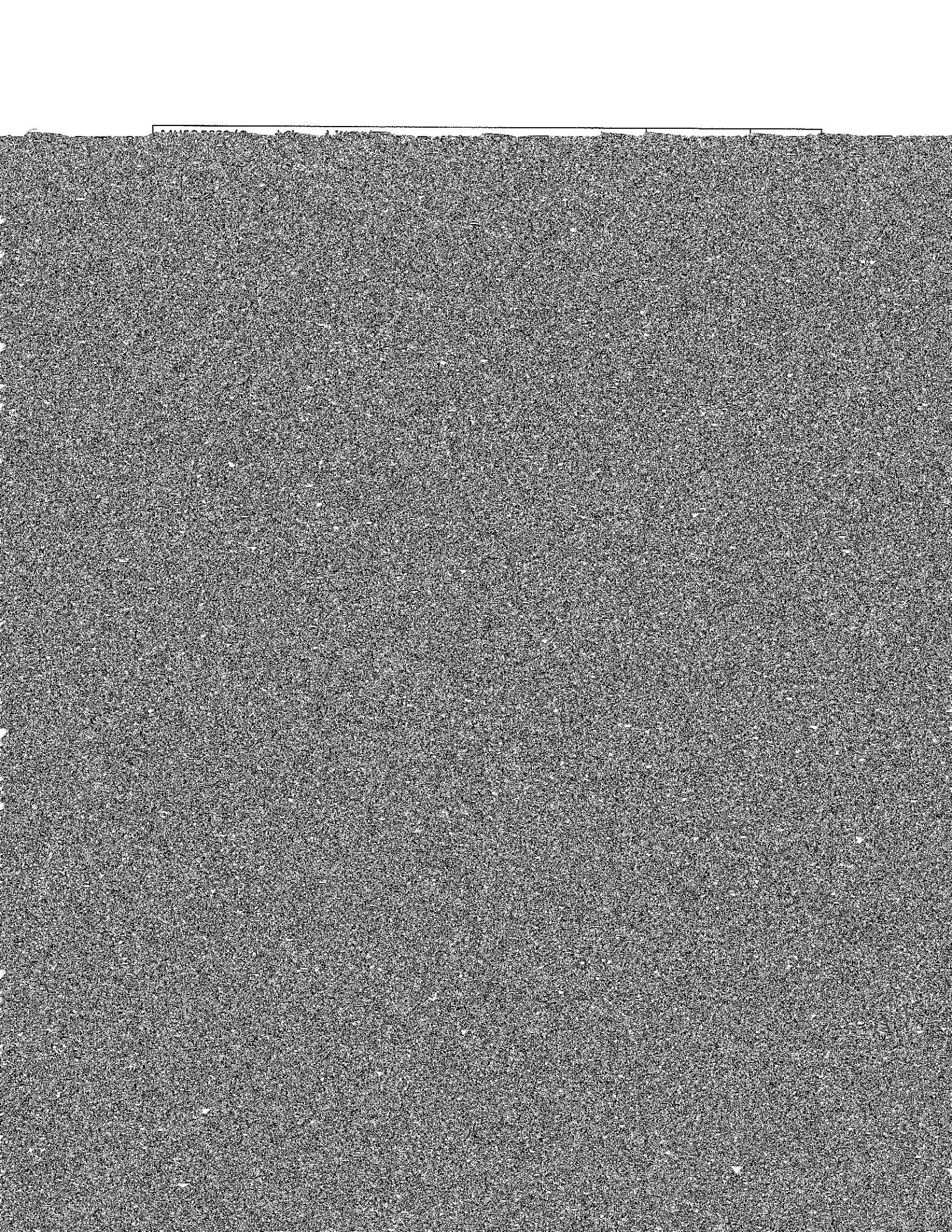
MUSA 1103, 1104 – Applied Piano Credit: 2 hours each class, 4 total credits

MUSA 1113, 1114 – Applied Voice Credit: 2 hours each class, 4 total credits

Applied

Schedule

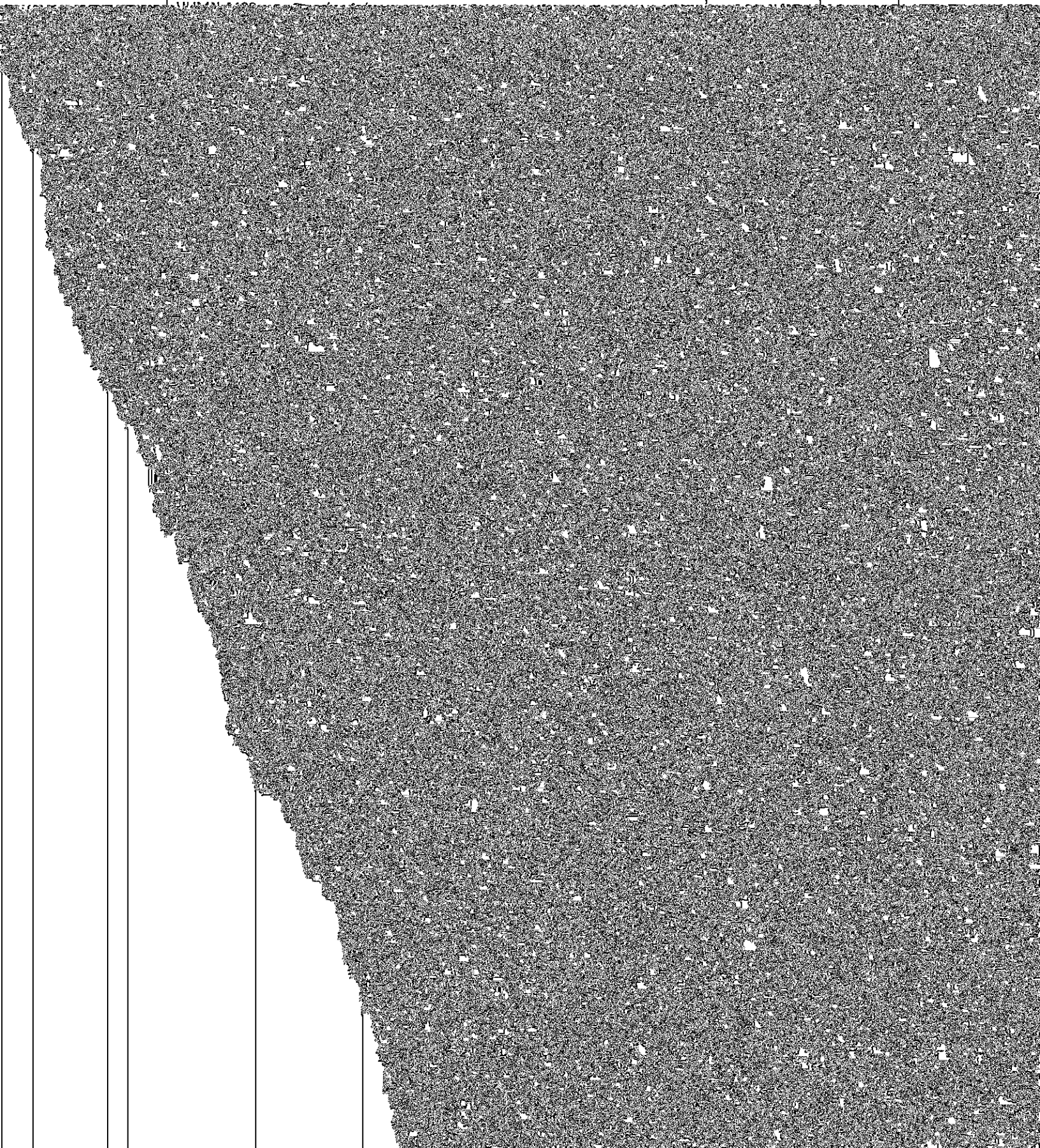




HUMN 4340 Introduction to Ethics  
Prerequisites: At least a "C" in ENGL 1102/1102H

3 CR

3 CR



Prerequisites: At least a "C" in ENGL 1101 or 1101H		
NMAC 3145 Digital Media Studio		
Prerequisites: At least a "C" in ENGL 1101 or 1101H		
NMAC 3600 Digital Storytelling		
Prerequisites: At least a "C" in ENGL 1101 or 1101H		
NMAC 3999 Special Topics		
POIS 3075 Interest Groups		

