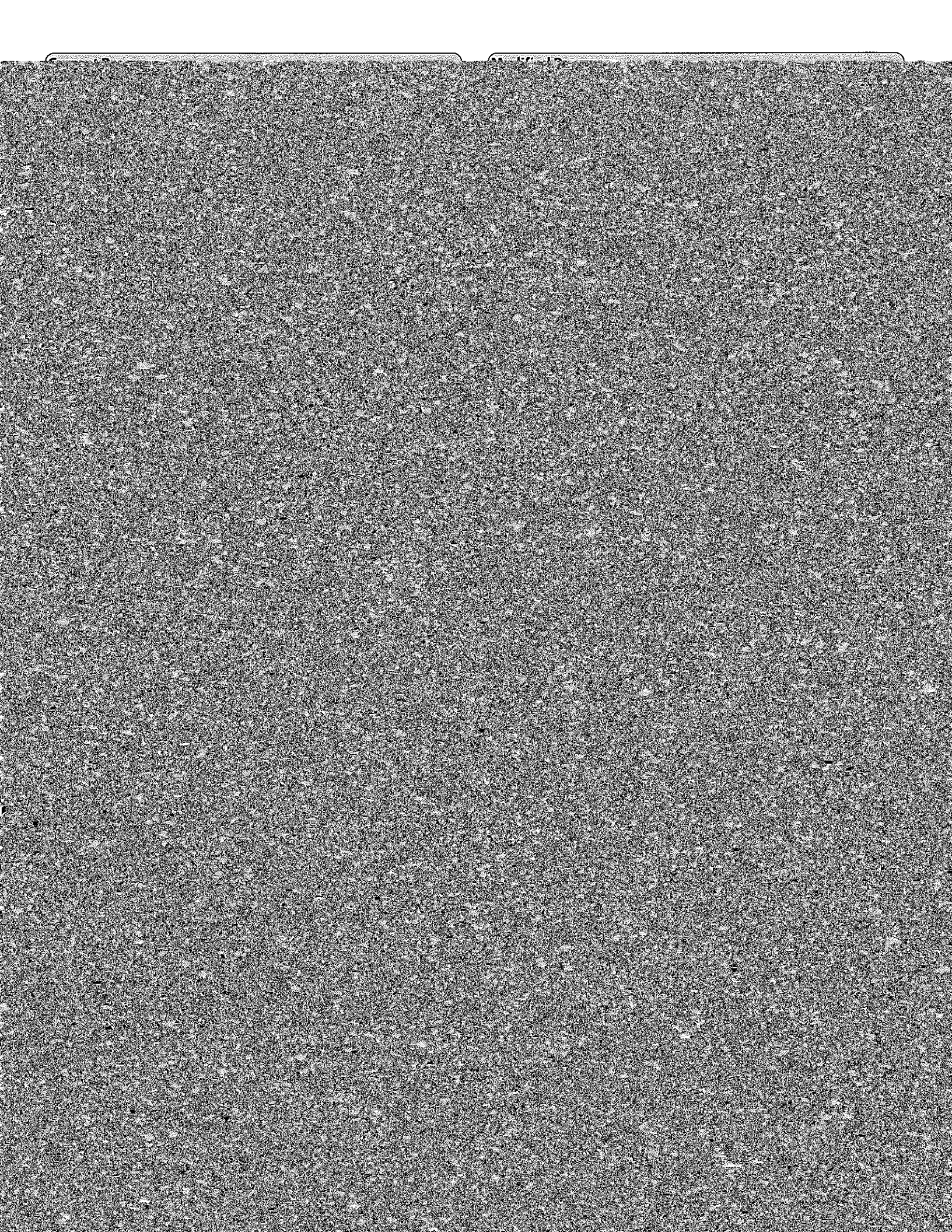
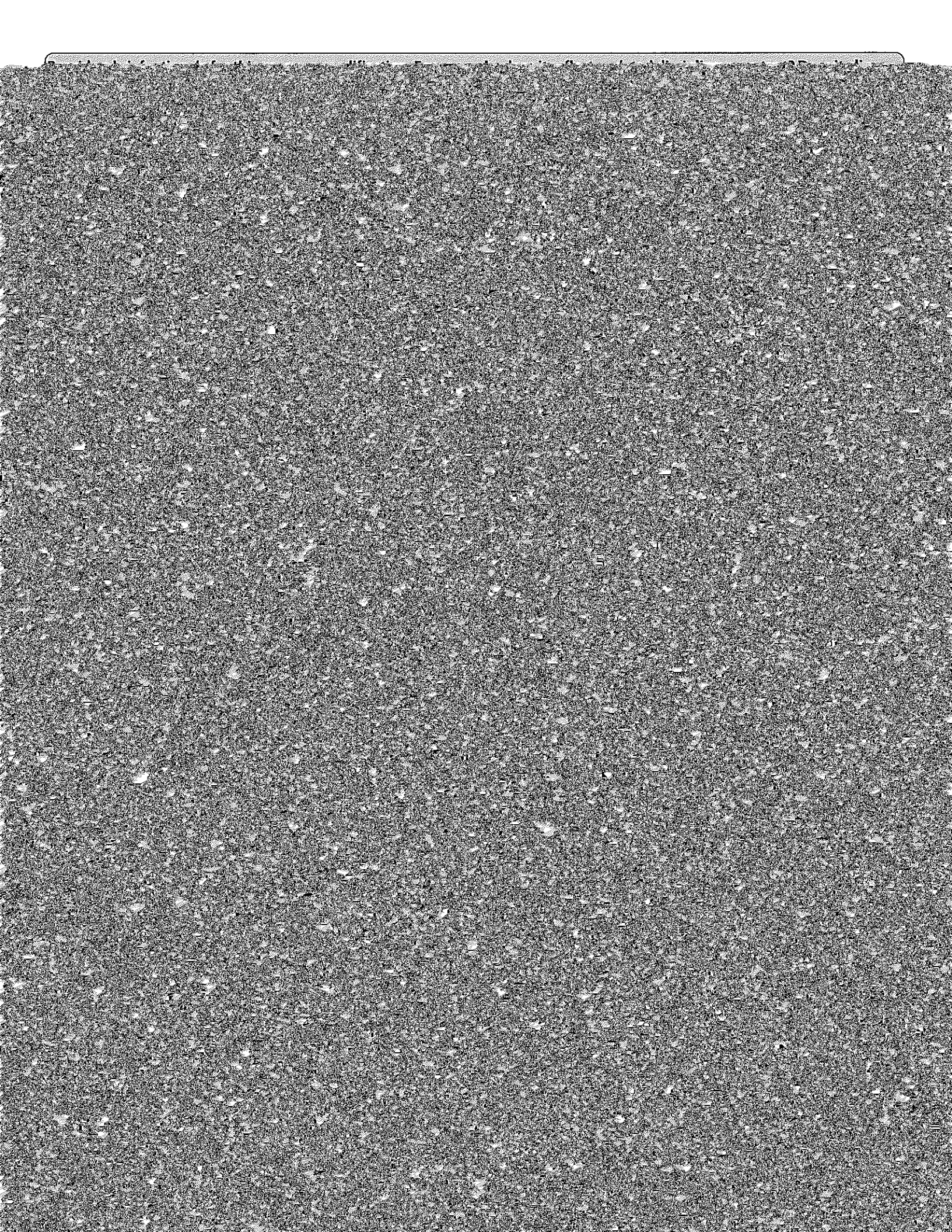


News Subject:

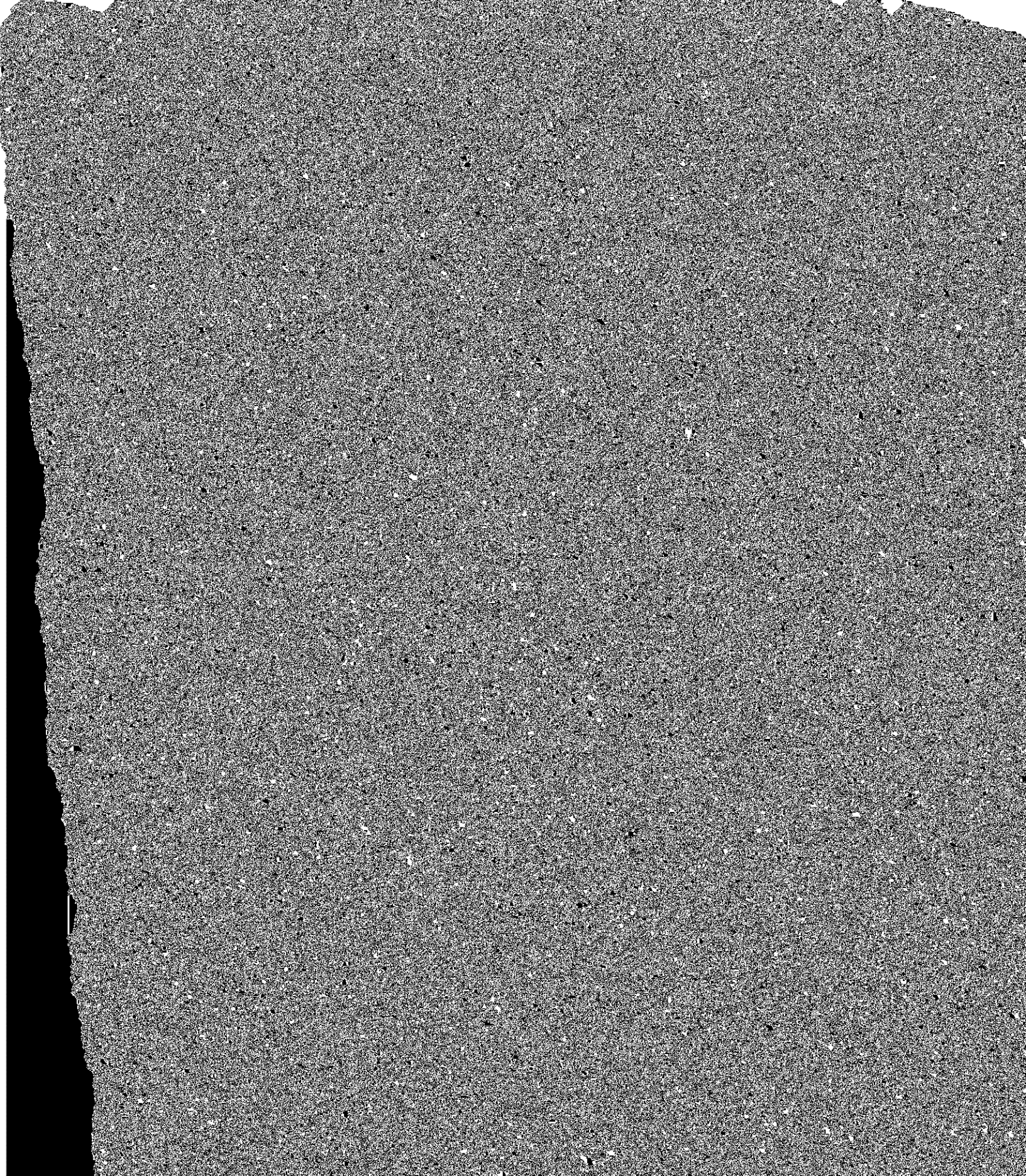
Financial Markets







Attachment 1: Program Description as it will appear in the catalog



Electives - Select seven courses from the following, to include at least four ENGL courses Credit: 21 hours

- Any French course(s) at the 3000-level
- Any history course(s) at the 3000-level
- Any Spanish course(s) at the 3000-level
- CRWR 3050 – Intermediate Poetry Writing **Credit: 3 hours**

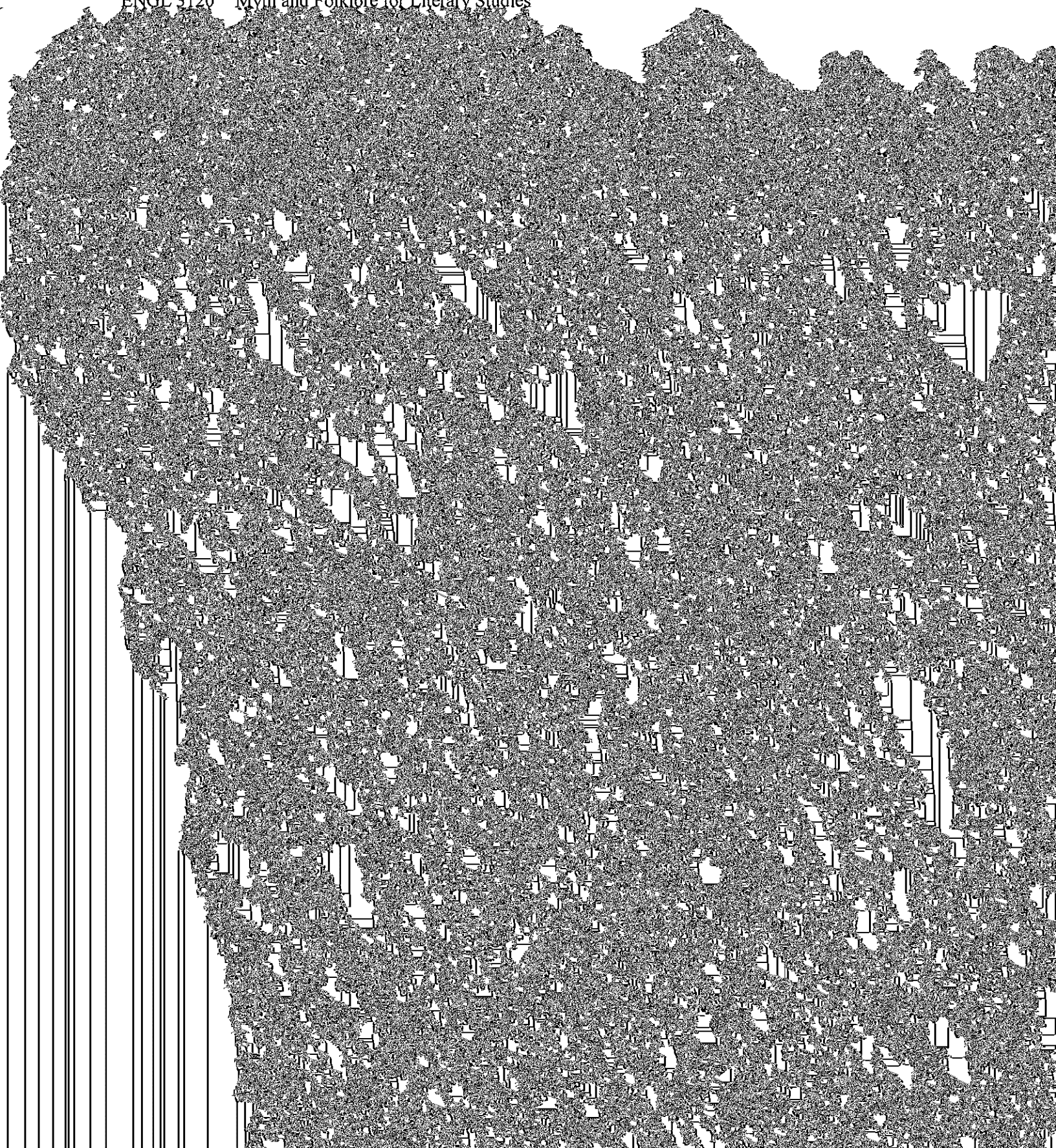
ENGL 2106 – Professional Writing and Communication **Credit: 2 hours**

Attachment 2: Current Program (B.A. in English, Traditional Track)

English Elective Courses: 12 hours

**ENGLISH ELECTIVE COURSES – Select four courses below
(with Chair's approval, Major Field Courses may count as Electives):**

- ENGL 3106 Professional Writing and Communications
- ENGL 3110 Middle English Language and Culture
- ENGL 3120 Myth and Folklore for Literary Studies



Attachment 3: Proposed Program (B.A. in English)

Major Field Courses: 39 hours

REQUIRED COURSES - Take all three courses below:

- ENGL 3010 Introduction to Literary Studies
- ENGL 4100 Shakespeare
- ENGL 4900 Senior Capstone Seminar

WESTERN PROSE AND POETRY – Select four courses below, at least one British and one American:

- ENGL 3100 Old English Language and Culture
- ENGL 3200 Chaucer
- ENGL 3300 Literature of the English Renaissance
- ENGL 3400 17th and 18th Century American Poetry and Prose
- ENGL 3500 19th Century American Poetry and Prose
- ENGL 3600 20th Century American Poetry and Prose

Elective Courses: 21 hours

**ELECTIVE COURSES – Select seven courses below, including at least four ENGL courses
(with Chair's approval. Major Field Courses may count as Electives).**