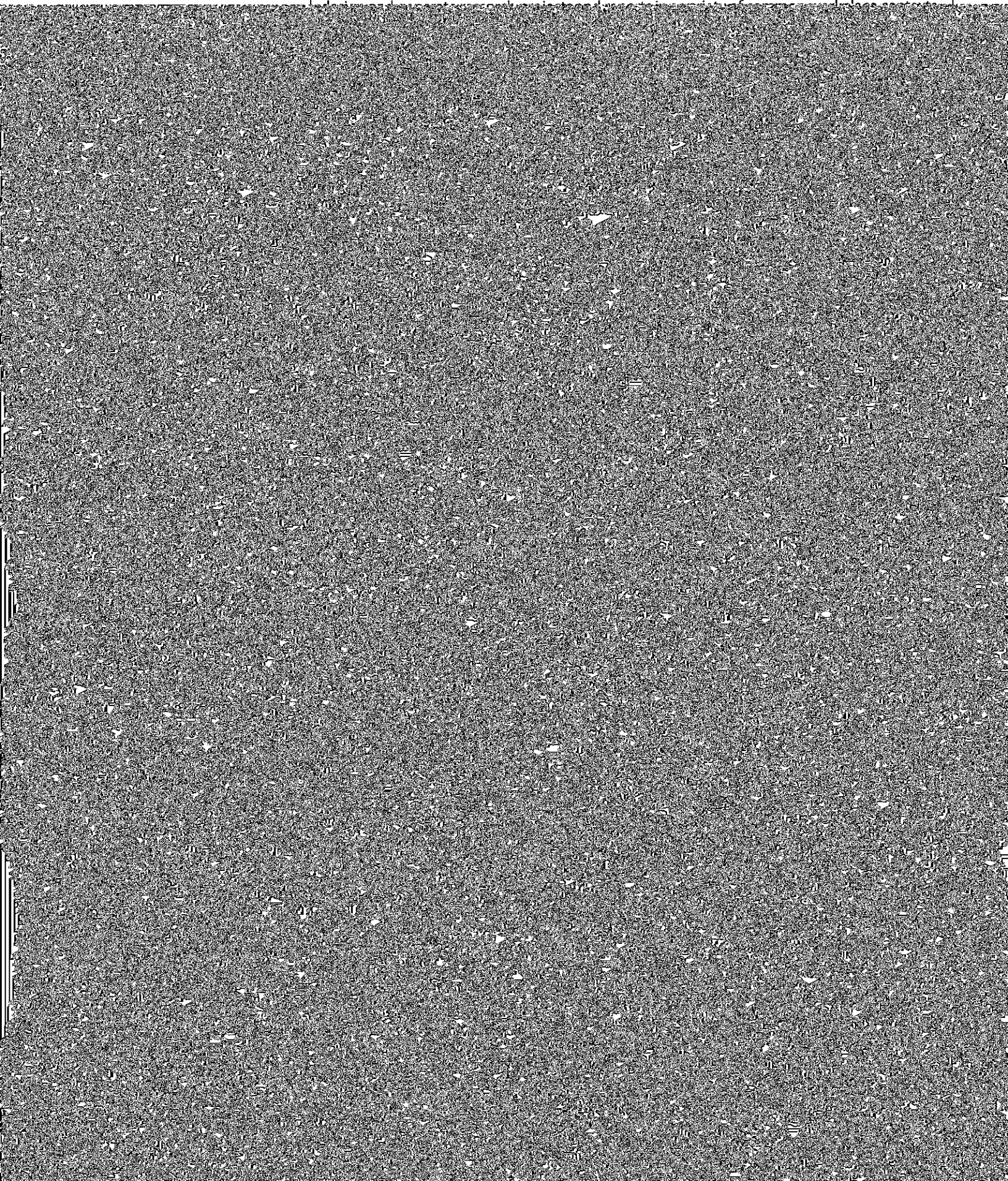




Course Student Learning Outcomes:

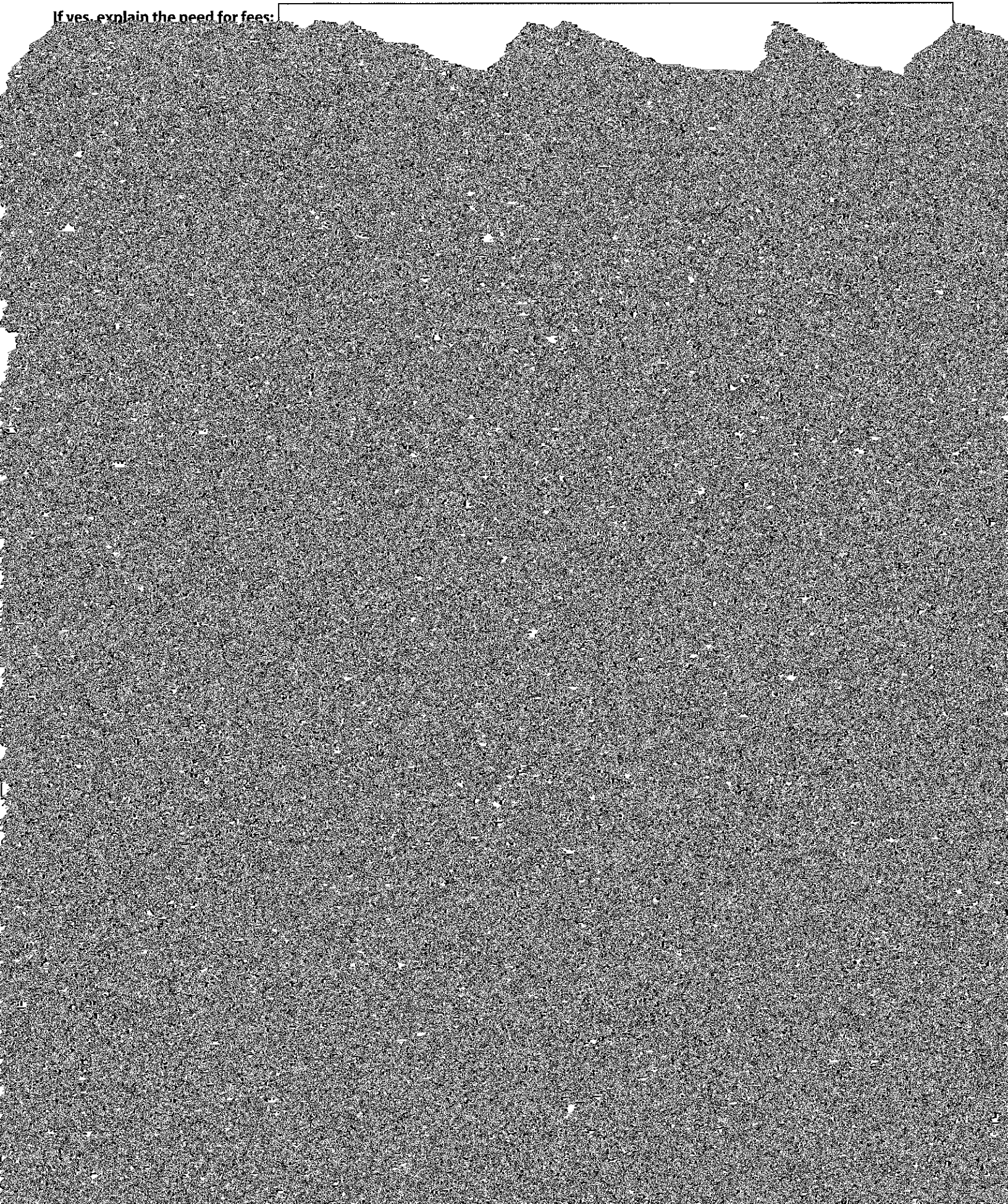
Students will

- generate plans for discovery, documentation, and communication of workplace research;
- compile research through multiple avenues of digital-age inquiry;



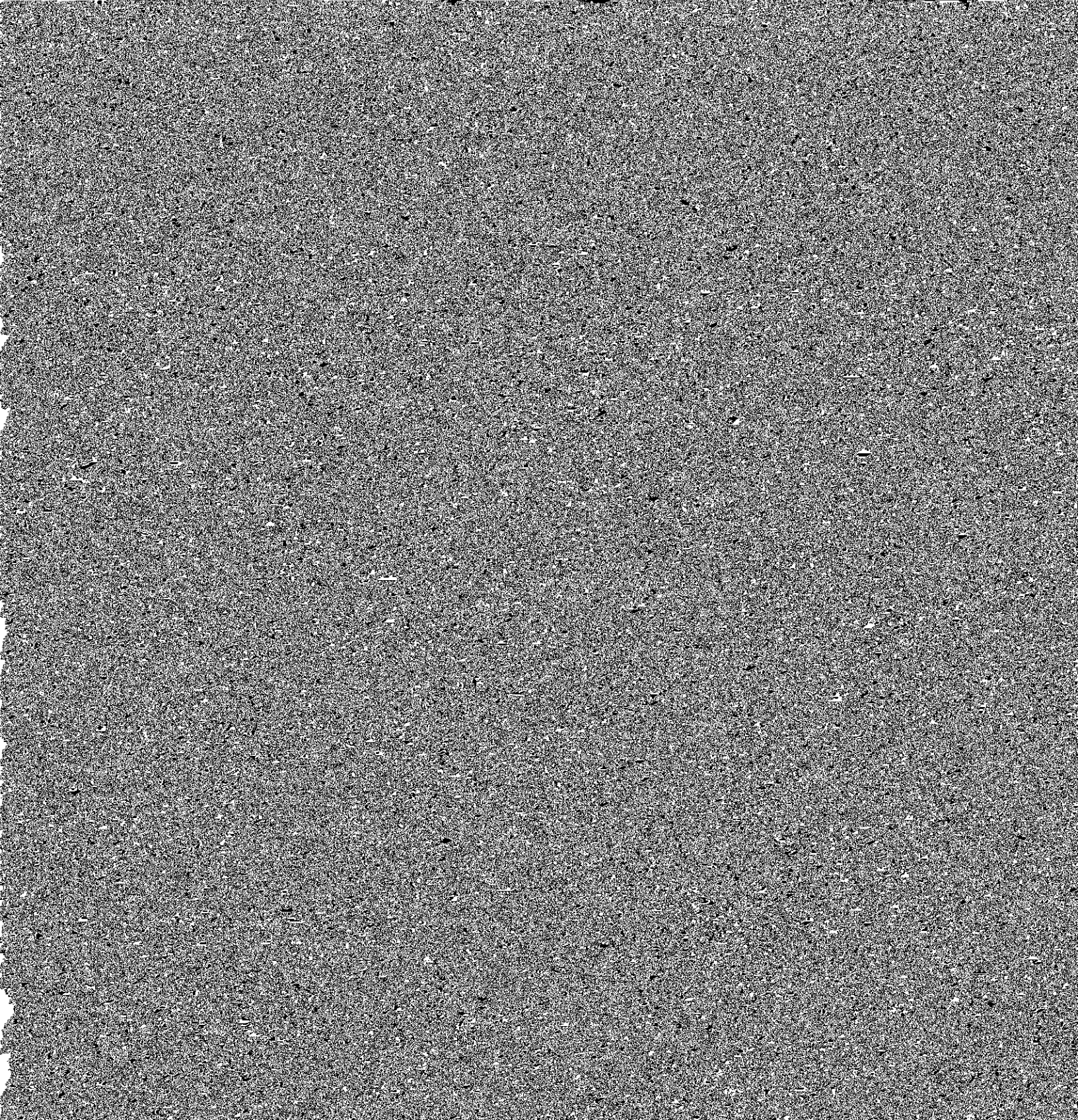
Are any special course fees associated with this course? Yes No

If yes, explain the need for fees:



Sample syllabus

**English 3180
Inquiry, Information, and Research Methods**



Sample ENGL 3180 Course Schedule

--	--	--

