

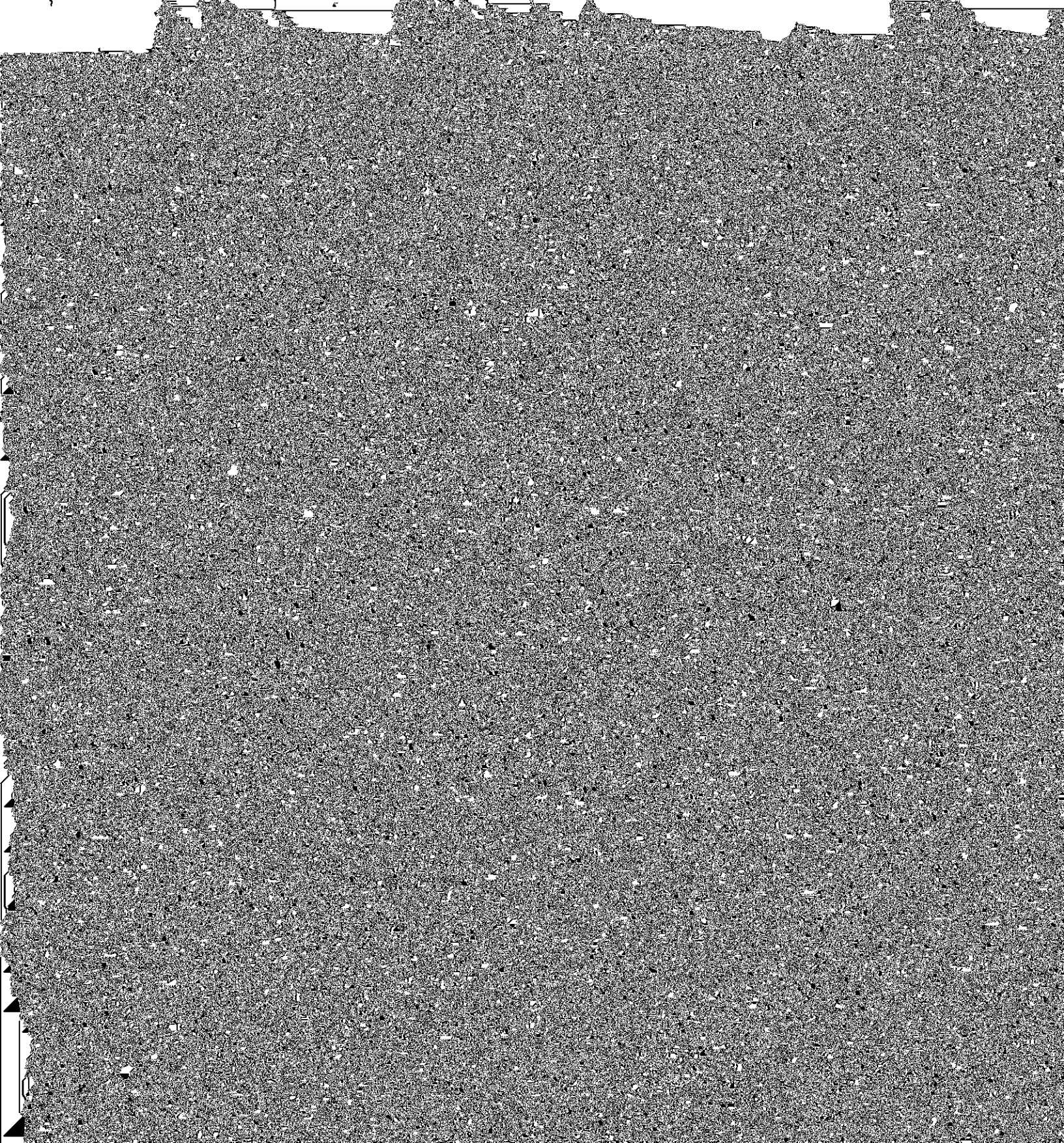
Provide a brief rationale for this program modification. For example, does it reflect updated disciplinary content? Does it align

MIDDLE GEORGIA STATE UNIVERSITY

School of Education

**CURRENT CURRICULUM**

**PROPOSED CURRICULUM**





- ECSE 3530 - Literacy Assessment and Intervention Strategies **Credit: 4 hours**
- ECSE 3540 - Educational Assessment for Learning **Credit: 4 hours**
- ECSE 3555 - Professional Roles and Teaching Practices II **Credit: 3 hours**
- ECSE 3800 - Social Studies: Designing Interdisciplinary Curriculum **Credit: 3 hours**
- ECSE 4200 - Mathematics Teaching & Curriculum in Grades Pre-K-5 **Credit: 3 hours**
- ECSE 4430 - Content Area Literacy **Credit: 2 hours**
- ECSE 4477 - Clinical Practice I **Credit: 4 hours**
- ECSE 4500 - Designing Instruction for All Learners **Credit: 3 hours**
- ECSE 4520 - Positive Behavior Supports **Credit: 3 hours**
- ECSE 4588 - Clinical Practice II **Credit: 4 hours**
- MATH 3106 - Foundations of Algebra **Credit: 3 hours**

- ECSE 3540 - Educational Assessment for Learning **Credit: 4 hours**
- ECSE 3800 - Social Studies: Designing Interdisciplinary Curriculum **Credit: 3 hours**
- ECSE 4200 - Mathematics Teaching & Curriculum in Grades Pre-K-5 **Credit: 3 hours**
- ECSE 4430 - Content Area Literacy **Credit: 2 hours**
- ECSE 4500 - Designing Instruction for All Learners **Credit: 3 hours**
- ECSE 4520 - Positive Behavior Supports **Credit: 3 hours**
- MATH 3106 - Foundations of Algebra **Credit: 3 hours**
- MATH 3110 - Informal Geometry **Credit: 3 hours**
- MATH 3156 - Introduction to Data Analysis **Credit: 3 hours**
- SCIE 3000 - General Science for Elementary Education **Credit: 3 hours**

